



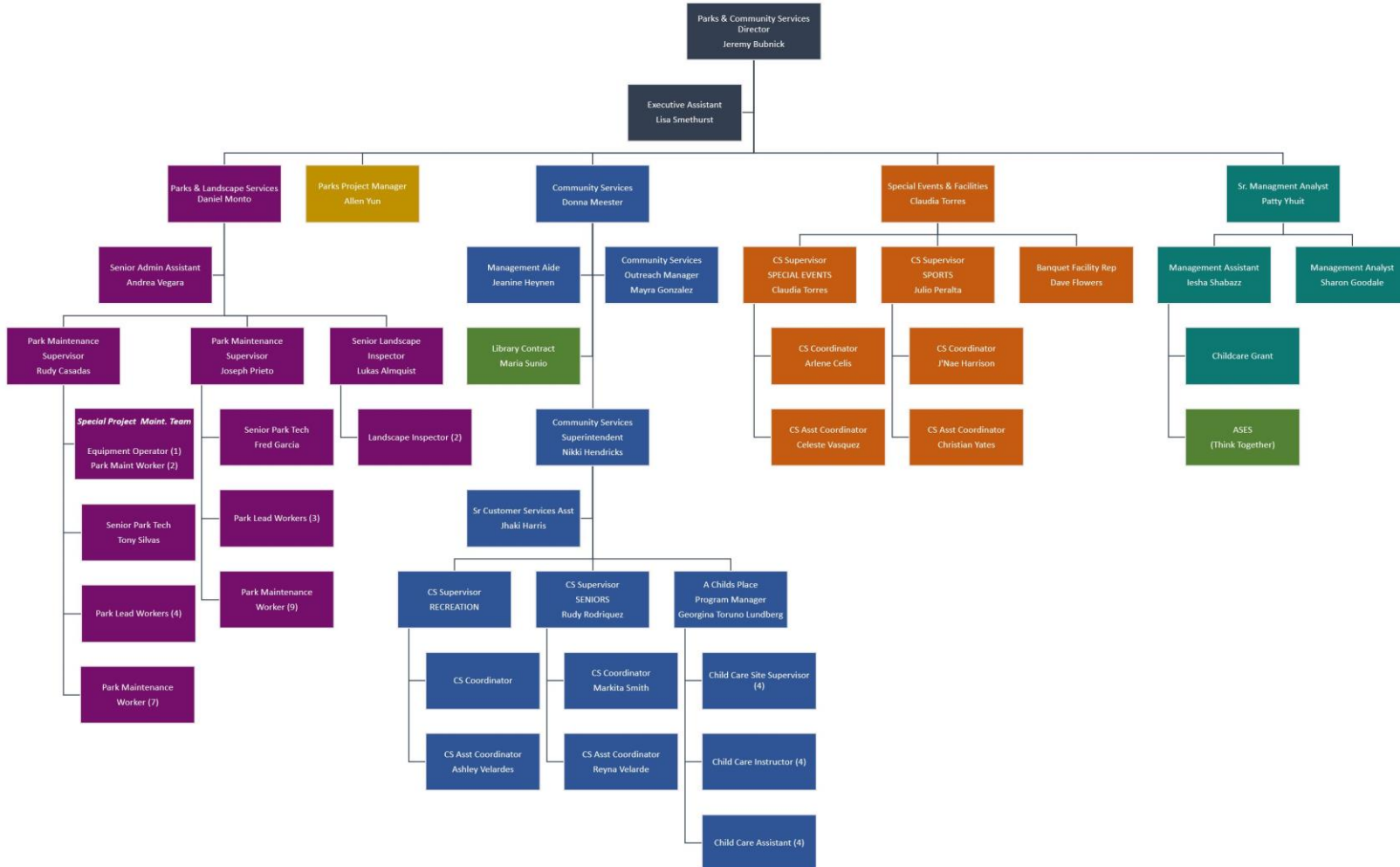
Parks and Community Services Department



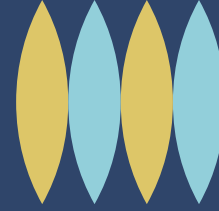
Jeremy Bubnick
Director

Parks & Community Services Team





WHAT IS PARKS AND COMMUNITY SERVICES?



THREE DIVISIONS



*Community
& Services*



*Facilities
&
Special Events*

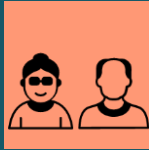


*Parks
&
Landscape
Services*



Community Services Division

8 FT/12 PT Career & 16 Temporary Employees



SENIOR SERVICES



RECREATION



AFTERSCHOOL
CHILDCARE



LIBRARY
SERVICES



Community Service Programs Recreation

Recreation

2.5 FTE & 13 Temporary Employees

- 3,612 Programs
- 4,000 Served

Recreational programs offered to residents of all ages, administer contract classes, coordinate the Time for Tots program, coordinate specialty and summer camps for teens and youth, coordinate the Teen SPOT to provide teens with digital access and inline resources for personal and professional growth, and oversee the Demonstration Garden.



Community Service Programs

Senior Services & Library

Senior Services

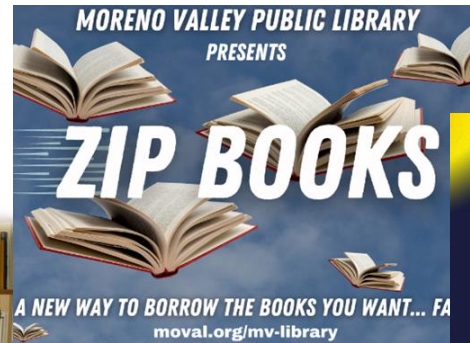
2.5 FTE & 3 Temporary Employees

- 720 Programs
- 6,700 Served

Library Services

Contract with Library Systems & Services

- 693 Programs
- 250,000 Served



Community Service Programs

Child Care (Grant)

2 FT & 12 PT Employees

A Child's Place

- Year-round licensed childcare serving 142 children at five elementary schools in the Moreno Valley and Val Verde Unified School Districts

After School Education & Safety Grant (ASES)

- Expanded learning services to more than 4,000 students daily at 43 elementary and middle schools in the Moreno Valley and Val Verde Unified School Districts.

21st Century Community Learning Centers Grant

- Summer expanded learning program services at Edgemont Elementary School, serving approximately 125 students annually.





Community Service Programs

Community Outreach (IFT Employee)

- Beautify MoVal
 - Quartely Community Day of Service
 - 3 Programs
 - 1,000 Volunteers
- Sponsorship Opportunities
 - Beautify MoVal
 - 4th of July Celebration
 - Community Special Events



SPECIAL EVENTS & FACILITIES DIVISION



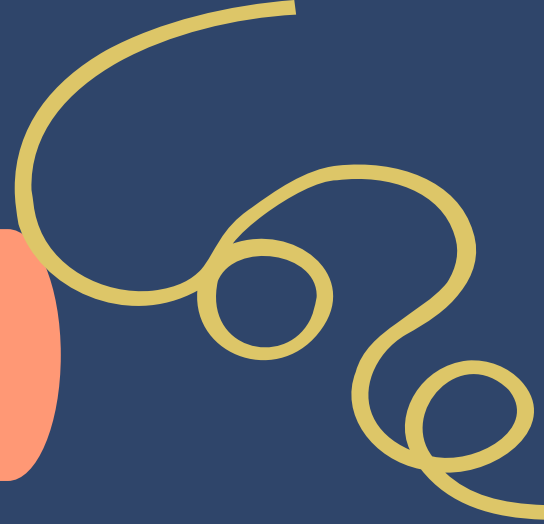
SPECIAL EVENTS



FACILITY RENTALS



SPORTS & GOLF OPERATIONS



Special Events & Facilities

6 FT/2 PT Career & 29 Temporary Employees

Special Events

2 FT & 1 PT Career & 3 Temporary Employees
30,000 Served

1. Art & Food Truck Festival
2. Springtastic
3. Adult Flashlight Egg Scramble
4. Earth Day
5. Public Safety Expo
6. Juneteenth
7. MoVal Rocks (5 Week series)
8. MoVal Movies (5 Week series)
9. 4th of July Parade & Funfest
10. National Night Out
11. El Grito
12. Day of Dead
13. Color Fun Run
14. Snow Day & Tree Lighting



Special Events & Facilities

Sports

2 FT/1 PT Career & 22 Temporary Employees

- **1,134 Programs**
- **900 served**
- **12,366 Golf Rounds @ Cottonwood Golf Center**

Facility Rentals

1 FT & 5 Temporary Employees

- **878 Facility Reservations**



Parks & Landscape Services Division



PARK PROJECTS



PARK &
GOLF COURSE MAINTENANCE



LANDSCAPE SERVICES



Parks & Landscape Services Division

35 FT Employees

- Maintenance of parks and facilities for 43 sites (626.02 acres)
- 32.93 of landscaping along Juan Bautista de Anza Bike Trail
- 11.68 miles of Multi-use Trails
- 16-acre Golf Course
- Oversee park/park facility construction and facility improvement projects.



PCS DEPARTMENT FACILITIES



33

Parks



32

Athletic Fields



11

Trails &
Greenways



4

Community
Centers



3

Libraries



2

Skate Parks



1

Golf Course



1

Equestrian Center

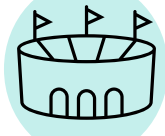
PCS DEPARTMENT MEASUREMENTS

Recreation



3,612 Programs
4,000 Served

Special Events



14 events
30,000 Served

Trails & Greenways



90 Acres
Maintained

Parkland



671 Acres
Maintained

Sports



1,134 programs
900 Served

Senior Services



720 programs
6,700 Served

Volunteers & Sponsors



3 programs
1,000 Volunteers

Libraries



693 programs
250,000 Served

PCS Summary

Boards/Commissions/Committees


- Parks, Community Services & Trails Advisory Committee
- Arts Commission
- Library Commission
- Senior Citizens Advisory Board
- Emerging Leaders Council



\$ 17.5M Operation Budget

\$ 10.3M Grant Funding

\$ 16.1M CIP Budget



Quality Parks & Community Services contribute to a positive community identity. They provide opportunities to improve your health, to connect with nature, to learn a new skill, to connect with others, to celebrate, and to improve your mental health.

Few things impact the Quality of Life of a community as Parks & Community Services do.

We truly make a difference!





**Parks
Make
Life
Better!**SM