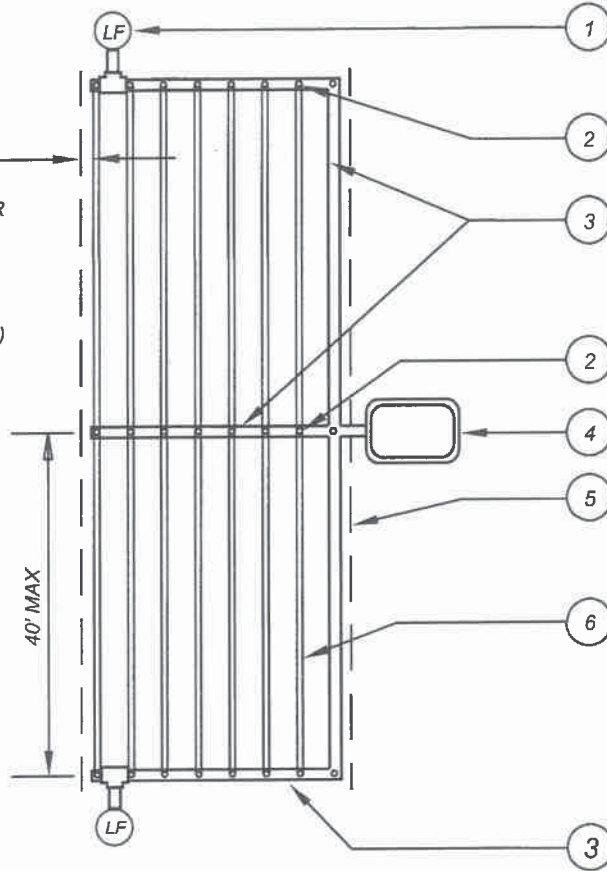


6" MIN CLEARANCE
BETWEEN 1ST ROW
AND EDGE OF PLANTER
(OR AS DETERMINED
IN THE FIELD AND
APPROVED BY
PARKS AND
COMMUNITY SERVICES)






- 1) MANUAL SHUT-OFF VALVE (REFER TO STANDARD MVLI-574H)
- 2) DRIPPERLINE TO PVC CONNECTION (REFER TO STANDARD MVLI-574F) OR MANUFACTURER'S PRE-MADE DRIPLINE HEADER
- 3) LATERAL LINE (BURIED 12" MIN)
- 4) REMOTE CONTROL VALVE WITH T58S-70-76 BALL VALVE, FILTER AND PRESSURE REGULATING VALVE (REFER TO PLANS)
- 5) AREA PERIMETER
- 6) DRIPPERLINE TUBING LATERAL (AS SPECIFIED) - BURIED 2" (SPACING AS SPECIFIED ON PLANS)

NOTES:

- 1.) SOIL STAPLE DRIPPERLINE TUBING AT 3' OC WITH RAINBIRD STAKE WITH BEND
- 2.) REFER TO STANDARD MVLI-574F-0 FOR DRIPPERLINE AND BELOW GROUND PVC CONNECTION
- 3.) REFER TO STANDARD MVLI-574H-0 FOR MANUAL SHUT-OFF/FLUSH VALVE

NOT TO SCALE

| | | | | |
|---|---|---|---|--|
|  | RECOMMENDED:  DIVISION MANAGER |  DATE | <h2 style="margin: 0;">CITY OF MORENO VALLEY</h2> <p style="margin: 0;">PARKS AND COMMUNITY SERVICES DEPARTMENT</p> | STANDARD PLAN <h3 style="margin: 0;">MVLI-574B-0</h3> |
| | APPROVED:  PUBLIC WORKS DIRECTOR / DATE CITY ENGINEER | <h3 style="margin: 0;">DRIPPERLINE (WITH INTEGRATED CHECK VALVES) CENTER FEED LAYOUT</h3> | | SHEET 2 OF 12 |